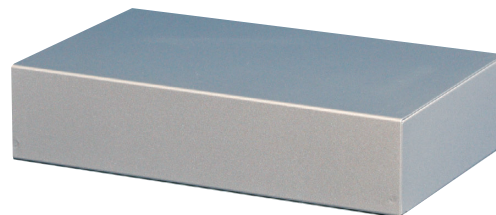


P SERIES

(表示価格は税抜きです)

カバー付きアルミシャーシ

※追加工、寸法変更承りますのでご相談下さい。



●機種内容

| 型番 | W | H | D | W1 | D1 | 板厚 | 自重 (g) | 定価 |
|-------|-----|----|-----|-----|-----|-------|--------|-------|
| P-1 | 200 | 60 | 130 | 140 | 120 | t=0.8 | 220 | 1,500 |
| P-2 | 150 | 50 | 100 | 114 | 90 | t=0.8 | 160 | 1,100 |
| P-3 | 120 | 50 | 80 | 84 | 70 | t=0.8 | 120 | 930 |
| P-4 | 100 | 40 | 70 | 70 | 60 | t=0.8 | 80 | 880 |
| P-5 | 80 | 35 | 50 | 50 | 40 | t=0.8 | 60 | 800 |
| P-11 | 300 | 70 | 180 | 180 | 170 | t=1.2 | 600 | 2,580 |
| P-12 | 250 | 60 | 150 | 150 | 140 | t=1.0 | 400 | 1,960 |
| P-101 | 280 | 60 | 130 | 180 | 120 | t=1.0 | 350 | 2,050 |
| P-102 | 250 | 50 | 100 | 150 | 90 | t=0.8 | 210 | 1,420 |
| P-103 | 150 | 50 | 80 | 114 | 70 | t=0.8 | 120 | 1,100 |
| P-104 | 150 | 40 | 70 | 114 | 60 | t=0.8 | 100 | 1,000 |
| P-105 | 120 | 35 | 50 | 84 | 40 | t=0.8 | 60 | 900 |
| P-111 | 280 | 70 | 180 | 180 | 170 | t=1.2 | 510 | 2,580 |
| P-112 | 300 | 60 | 150 | 180 | 140 | t=1.0 | 390 | 2,300 |
| P-201 | 250 | 60 | 130 | 150 | 120 | t=1.0 | 320 | 1,860 |
| P-202 | 230 | 50 | 100 | 150 | 90 | t=0.8 | 190 | 1,360 |
| P-203 | 100 | 50 | 80 | 70 | 70 | t=0.8 | 90 | 990 |
| P-204 | 120 | 40 | 70 | 84 | 60 | t=0.8 | 80 | 980 |
| P-211 | 250 | 70 | 180 | 150 | 170 | t=1.2 | 460 | 2,390 |
| P-212 | 280 | 60 | 150 | 180 | 140 | t=1.0 | 370 | 2,180 |
| P-301 | 230 | 60 | 130 | 150 | 120 | t=1.0 | 300 | 1,760 |
| P-302 | 200 | 50 | 100 | 140 | 90 | t=0.8 | 170 | 1,250 |
| P-311 | 230 | 70 | 180 | 150 | 170 | t=1.2 | 430 | 2,290 |
| P-312 | 230 | 60 | 150 | 150 | 140 | t=1.0 | 310 | 1,930 |
| P-401 | 180 | 60 | 130 | 140 | 120 | t=1.0 | 250 | 1,530 |
| P-402 | 180 | 50 | 100 | 140 | 90 | t=0.8 | 160 | 1,200 |
| P-411 | 200 | 70 | 180 | 140 | 170 | t=1.2 | 390 | 2,120 |
| P-412 | 200 | 60 | 150 | 140 | 140 | t=1.0 | 280 | 1,790 |
| P-501 | 150 | 60 | 130 | 114 | 120 | t=1.0 | 220 | 1,430 |
| P-502 | 120 | 50 | 100 | 84 | 90 | t=0.8 | 120 | 1,060 |
| P-512 | 180 | 60 | 150 | 140 | 140 | t=1.0 | 260 | 1,700 |
| P-601 | 120 | 60 | 130 | 84 | 120 | t=1.0 | 190 | 1,290 |
| P-602 | 100 | 50 | 100 | 70 | 90 | t=0.8 | 100 | 1,000 |
| P-612 | 150 | 60 | 150 | 114 | 140 | t=1.0 | 230 | 1,590 |

●構成部品

| 照番 | 部品名称 | 数量 | 材質 | 表面処理 |
|----|--------|----|--------|---------------|
| ① | ボディ | 1 | A1050P | シルバーグレー |
| ② | ボトムカバー | 1 | A1100P | シルバー (カラーアルミ) |

